



Pandemic Response Plan

Returning to School 2021-22

MAXIMIZE LEARNING AND COMMUNITY HEALTH

RETURN TO
>>>> LEARN

January 19, 2022

EXECUTIVE SUMMARY

Our goals are to keep everyone healthy and avoid disruptions to in-person learning as much as possible. In order to do this, we have put the following safety measures in place based on current recommendations and local health conditions.

Parkway continues to review health guidance and recommendations and we will update our plans as recommendations and health conditions change. We are encouraged by the availability of vaccination for staff and students, including most recently, for our elementary students.

The following plan will be reviewed, updated and changed as needed. It will continue to be reevaluated and reviewed by the Board of Education every 30 days.

Opportunities for the public to provide ongoing input to our plan are listed on page 7.

Thank you for partnering with us to keep our community safe and healthy. Additionally, thank you for your ongoing understanding and support.



What can I expect at school?

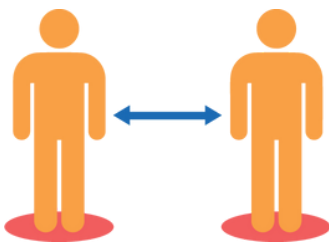
Health & Safety Precautions

MITIGATION STRATEGIES



FACE COVERINGS

- Face coverings, i.e., “masks,” will continue to be required of all students, staff and visitors through **February 18, 2022**. This is subject to change based on conditions in each particular school building, conditions in the community at large, and CDC guidelines. The Board of Education will review the health conditions at its regular board meeting scheduled for February 16, 2022.
- Masks continue to be required on all forms of public transportation, including school buses, per the U.S. Department of Transportation and CDC recommendations.
- Masks will continue to be optional outdoors for all students, staff and visitors.
- When conditions allow us to move to a mask recommended status, the following safety procedures will be followed. If there is a “COVID-19 outbreak,” as defined below, at a school, masks will be required for a temporary period of time at that school or building. The goal is to limit additional spread during an outbreak, protect the health and safety of students and staff, and avoid having to close the school. Therefore, masks will be required for all individuals in the school building for two weeks (14 calendar days) once the positivity rate reaches the threshold noted on page seven. If after two weeks, the building’s positivity rate is below the threshold noted on page seven, then masks will once again become optional. However, if the positivity rate for the building remains at or above the threshold defined on page seven, then all individuals in the building will be required to wear face masks for an additional week or until the school building’s positivity rate is below the threshold noted on page seven.
- An outbreak in a school is defined as: 2% or more of the student population tests positive for COVID-19 at a given time (and a minimum of 8 students regardless of school size). We will continue to monitor health conditions of teachers and staff and include this information on our [Community Health Dashboard](#).
- The District is required to provide a safe learning environment for all, including those with certain disabilities. Therefore, despite the threshold noted above, masks may be required in certain classrooms, depending upon the health and safety needs of individual students or staff members.



SOCIAL DISTANCING

- In our schools and classrooms, seating and activities will allow for social distancing of at least three feet whenever possible.

What can I expect at school?

Health & Safety Precautions

MITIGATION STRATEGIES

COMMUNICABLE DISEASE POLICIES



Note that pursuant to Robinson v. Missouri Department of Health and Senior Services, Cole County, Missouri, Case No. 20AC-CC00515, the St. Louis County Department of Health no longer has the authority to issue certain orders after December 22, 2021. COVID-19 will be treated as similar to other contagious illnesses using our current board policies and Missouri law (167.191 RSMo), as outlined below.

Effective **December 23, 2021**, the following protocol will be in place:

Students infected with COVID-19:

- Individuals infected with COVID-19 will not be permitted to attend school based on board policy and Missouri law.
- Parents should remain in communication with the school nurse and receive authorization from the school nurse prior to returning to school. Prior to returning to school, students will need to produce a negative COVID test. If the individual has not obtained a test, the individual will be excluded from school for ten calendar days after the onset of symptoms.
- At home COVID-19 test results will not be accepted.
- The District will provide support to families who may need assistance in obtaining testing.

Students with symptoms of COVID-19:

- Similar to other contagious illnesses such as chicken pox or the flu, individuals who are sick at school or have symptoms of COVID-19 will be sent home with instructions to see a physician for medical evaluation.
- Prior to returning to school, students will need to produce 1) a negative COVID test; or 2) a physician's diagnosis other than COVID-19 or 3) if the individual has not obtained a test or physician's diagnosis, the individual will be excluded from school for ten calendar days after the onset of symptoms. Parents should remain in communication with the school nurse and receive authorization from the school nurse prior to returning to school.
- At home COVID-19 test results will not be accepted.
- The District will provide support to families who may need assistance in obtaining testing.

Effective **January 10, 2022**, the following protocol is in place for staff:

Staff members infected with COVID-19 or who have symptoms will not be permitted to come to work based on board policy and Missouri law. Staff members should remain in communication with their school nurse or building contact tracer and receive authorization prior to returning to school/work. Prior to returning to work, staff infected with COVID-19 or who have symptoms will need to meet the requirements outlined in the flow chart found in Appendix A.

Close contacts:

- Students and staff will not be excluded from school or work solely as a result of being a close contact with a positive case at school, regardless of vaccination status.
- However, per Board policy and Missouri law (Section 167.191 RSMo), should the District receive evidence that a close contact (whether or not the exposure is at school) may be liable to transmit COVID-19 after exposure, then the District may exercise its authority to require testing of the student or staff member and to exclude the student or staff member if they refuse to take a test or test positive.

Contact tracing:

- We will use contact tracing and continue to notify parents and staff if they or their child is exposed at school to an individual infected with COVID-19. Parents and staff will be asked to monitor their child and themselves for symptoms of COVID-19. Testing will be encouraged.
- We will continue to publish data on our [Community Health Dashboard](#) so parents and staff can follow daily health conditions in each school and building.

How we can continue to help keep our schools safe:

- Stay home and get tested if you experience symptoms associated with COVID-19, have been exposed at home to someone who has tested positive for COVID-19, or have been recently tested for COVID-19 and are awaiting the test result. Symptoms of COVID-19 include:
 - fever or chills
 - cough
 - shortness of breath or difficulty breathing
 - congestion or runny nose
 - sore throat
 - tiredness
 - muscle or body aches
 - headache
 - nausea or vomiting
 - loss of taste or smell
 - diarrhea
- If your child tests positive for COVID-19, please notify your school nurse as soon as possible.
- If you are an employee and test positive for COVID-19, notify your contact tracer as soon as possible.

For more information on board policies for communicable diseases and Missouri law, see below.

[JLCC.BP - Student with communicable diseases](#)

[JLCC.G \(guidelines\)](#)

[GBGF.BP - Employees with communicable diseases](#)

[GBGF.G \(guidelines\)](#)

[Missouri Revised Statute 167.191](#)

What can I expect at school?

Health & Safety Precautions

MITIGATION STRATEGIES



EVENTS AND ACTIVITIES

- Large gatherings and school events will be structured in order to reduce the risk of exposure whenever possible.
- Athletic competitions and activities will continue to follow any guidance or requirements of the Missouri State High School Activities Association (“MSHSAA”).
- Field trips will be determined based on the ability to reduce the risk of exposure whenever possible.
- Visitors will be limited inside the school and classrooms to minimize the risk of exposure whenever possible. We will continue to monitor and evaluate allowing visitors and volunteers in our schools and buildings.



SCREENING AND TESTING

- Before leaving for school, families should perform an evaluation of their students’ health. If your student is feeling ill, do not send them to school.
- Notify your school of your child's symptoms, and call your health care provider for advice on managing illness.
- Parkway will provide resources and information to parents and staff on how to access COVID-19 testing if needed in our region.



VACCINATIONS

- We highly encourage vaccination for all students and staff. While COVID-19 vaccination is not required to attend public school in Missouri, it can protect your child and others at school.
- For information on convenient access to vaccination in our region, visit covidvaccine.mo.gov.

CLEAN AND HEALTHY HABITS



- Each day we will routinely clean and disinfect frequently touched surfaces.
- Students will be encouraged to wash/clean their hands often throughout the school day.
- Students will also be taught and encouraged to use appropriate respiratory etiquette, such as:
 - Covering a cough or sneeze by coughing and sneezing into a tissue or elbow;
 - Disposing of tissue immediately in a nearby receptacle; and
 - Washing/cleaning of hands and nearby surfaces.
- Parkway heating and cooling systems are updated using standards established by the American Society of Heating, Refrigerating and Air-Conditioning Engineers (ASHRAE), which are recommended by the CDC. System operation and ventilation will continue to be monitored and updated based on CDC and ASHRAE guidance. Our upgraded systems utilize the newest technologies and ensure fresh outside air is brought in continually throughout the day, and that components such as fans and filtering systems are working correctly.

What can I expect at school?

Health & Safety Precautions

MITIGATION STRATEGIES



RIDING THE BUS

- Due to ongoing staff shortages, parents are encouraged to provide transportation to school if possible. If you need to request transportation, or make a change during the year, you can call the Transportation Department at 314-415-8400.
- Masks continue to be required on all forms of public transportation, including school buses, per the U.S. Department of Transportation and CDC recommendations.



PRESCHOOL AND EARLY CHILDHOOD

- Early Childhood will maintain their current mask protocol.
- Effective December 23, early childhood will follow Parkway Communicable Disease Policies.



ACCOMMODATING ALL STUDENTS

- Schools will partner with families and students to ensure equity and access to instruction. Accommodations will be made as needed for students who are medically vulnerable or require individualized education plans.
- School nurses and other District personnel will work with families and students with disabilities to ensure they receive continued care, allowing students priority visits and/or private visits with the nurse as needed, so a student can have his/her healthcare needs met and also minimize exposure to ill students.

COMMUNITY INPUT

Parkway continues to receive public input at monthly board meetings and other forums regarding COVID mitigation measures for the 2021-22 school year.

We invite all Parkway stakeholders to tell us how we're doing on our Pandemic Response Plan. Ongoing opportunities for feedback are outlined at parkwayschools.net.

In addition, the following opportunities have been provided to Parkway stakeholders to share input on our ongoing mitigation and prevention strategies.

MARCH 19, 2020

COVID 19 UPDATE/RESPONSE, E-LEARNING INSTRUCTION AND DETAILS, SCHOOL, STUDENT AND FAMILY NEEDS, CONTINUING OPERATIONS, COMMUNICATIONS BOARD REPORT

MAY 20, 2020

ANNUAL PLANNING - INCLUDED DRAFT OF POTENTIAL RE-ENTRY PLANNING FOR AUGUST BOARD REPORT

SEPTEMBER 29, 2020

RECOMMENDATION FOR APPROVAL OF CHANGES IN SCHOOL TEACHING AND LEARNING MODELS BEGINNING SECOND QUARTER BOARD ACTION ITEM AND REPORT

OCTOBER 7, 2020

UPDATED RECOMMENDATION REGARDING HIGH SCHOOL TEACHING AND LEARNING MODEL BOARD ACTION ITEM AND REPORT

OCTOBER 21, 2020

RETURN OF STUDENTS TO IN-PERSON INSTRUCTION PREK-12/UPDATE ON CURRENT COVID METRICS BOARD REPORT

NOVEMBER 18, 2020

CURRENT STATUS OF COVID, SCHOOL OPERATIONS AND FUTURE PLANS BOARD ACTION ITEM AND REPORT

DECEMBER 2, 2020

BOARD WORKSHOP
PROJECT PARKWAY 3.0 AND FUTURE PLANNING
BOARD REPORT

DECEMBER 21, 2020

COMPREHENSIVE LEARNING PLAN FOR SECOND SEMESTER
BOARD ACTION ITEM AND REPORT

FEBRUARY 16, 2021

COVID INFORMATION; FUTURE PLANNING
BOARD REPORT

JUNE 2021

PANDEMIC RESPONSE PLAN UPDATED WITH ESSER REQUIREMENTS

JUNE 30, 2021

ESSER SURVEY TO PARKWAY COMMUNITY

AUGUST 11, 2021

ESSER FEDERAL FUNDS UPDATE
BOARD OF EDUCATION MEETING
BOARD REPORT

OCTOBER 20, 2021

COMMUNITY SATISFACTION SURVEY COVID RESPONSE

DECEMBER 15, 2021

BOARD ACTION ITEM AND REPORT

JANUARY 13, 2022

BOARD ACTION ITEM AND REPORT

SCHOOL POSITIVITY THRESHOLD

IN - PERSON ENROLLMENT TOTALS

If there is a COVID-19 outbreak at a school, masks will be required for a temporary period of time at that school or building.

An outbreak in a school is defined as 2% or more of the student population positive for COVID-19 at a given time (and a minimum of 8 students regardless of school size). The number of cases required per school building is below.

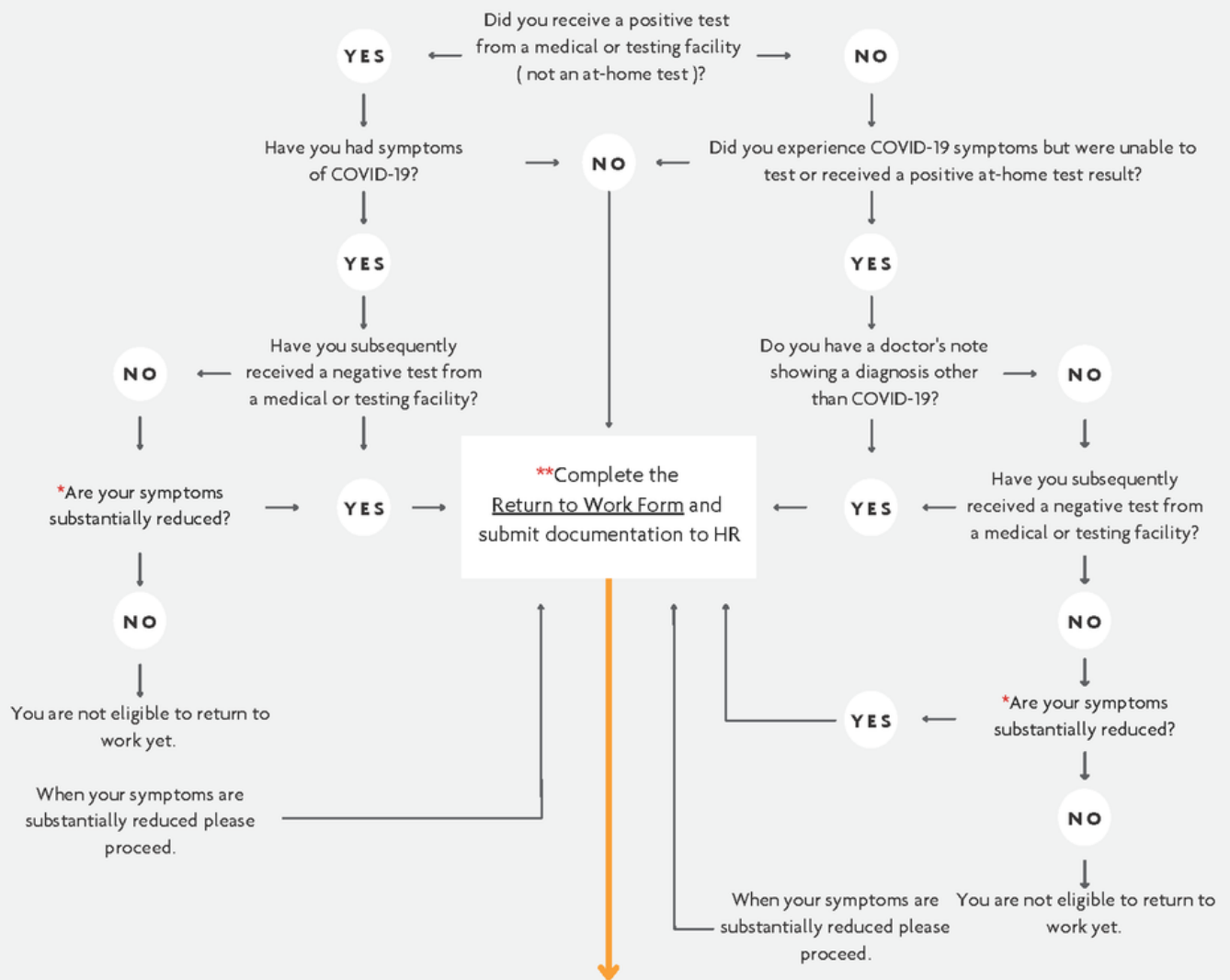
Your School	Total	Number of cases required
Barretts Elementary	328	8*
Bellerive Elementary	375	8*
Carman Trails Elementary	383	8*
Central High	1156	24
Central Middle	861	18
Claymont Elementary	497	10
Craig Elementary	316	8*
Fern Ridge High	96	8*
Green Trails Elementary	371	8*
Hanna Woods Elementary	422	9
Henry Elementary	539	11
Highcroft Ridge Elementary	353	8*
Mason Ridge Elementary	422	9
McKelvey Elementary	424	9
McKelvey Primary	216	8*
North High	944	19
Northeast Middle	693	14
Oak Brook Elementary	407	9
Pierremont Elementary	435	9
River Bend Elementary	434	9
Ross Elementary	384	8*
Shenandoah Valley Elementary	429	9
Sorrento Springs Elementary	261	8*
South High	1513	31
South Middle	545	11
Southwest Middle	556	12
West High	1318	27
West Middle	1058	22
Wren Hollow Elementary	436	9

* A minimum of 8 students testing positive for COVID-19 required regardless of school size



**YOU TESTED POSITIVE FOR COVID-19 AND/OR HAVE SYMPTOMS
WHEN CAN YOU RETURN TO WORK?**

STAY HOME FOR 5 DAYS IF YOU TEST POSITIVE
YOU MAY RETURN EARLIER IF YOU SUBSEQUENTLY RECEIVED A NEGATIVE TEST



RETURN TO WORK

***Are my symptoms substantially reduced?**

- You feel well enough to come to work
- Fever free for 24 hours without fever reducing medication
- No more than a minimal, non-productive cough (i.e., not disruptive to work, doesn't stop you from wearing a mask continuously, and you are not coughing up phlegm)

****What documentation do I need before I return to work?**

- All absences of more than three consecutive work days require doctor's note per board policy. In order to return to work, you will need:
 - a COVID test from a medical or testing facility (ex. physician's office, pharmacy, testing facility, health department). The test can serve as your doctor's note; OR
 - a doctor's note